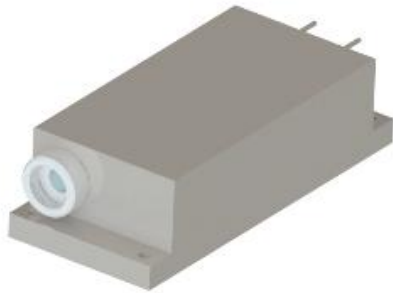
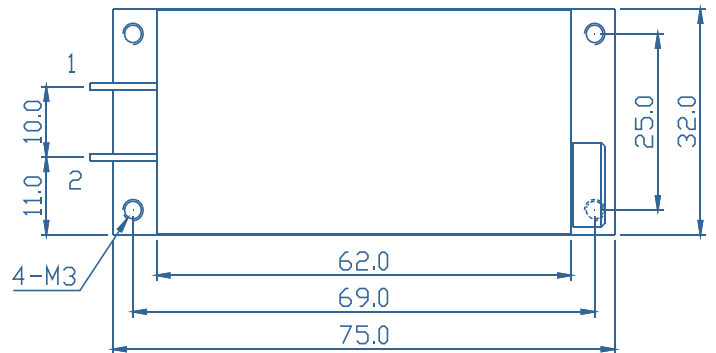
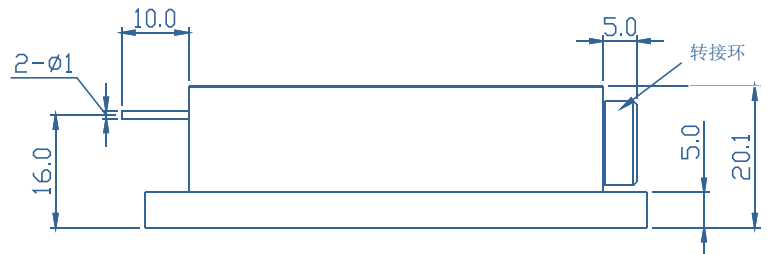
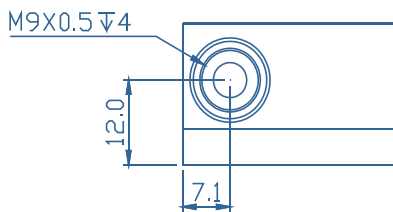


B-Series High Power Laser Diode Module



- Features
- ◆ High output power of 20W
 - ◆ Laser beam collimation output
- Applications
- ◆ Laser Marking
 - ◆ Laser Surface Heat Treatment

Package Dimensions (mm)



Pin-out Assignment

Pin	Function
1	LD (+)
2	LD (-)

Typical Device Performance (20°C)

	Min	Typical	Max	Unit
Optical				
CW Output Power	-	20.0	-	W
Center Wavelength	-	450±10	-	nm
Spectral Width	-	4.0		
Electrical				
Threshold Current	-	0.4	-	A
Operating Current	-	3.1	-	A
Operating Voltage	-	15.6	-	V
Slope Efficiency	-	7.4	-	W / A
Power Conversion Efficiency	-	41.0	-	%
Beam parameters				
Horizontal Spot Size At Window Mirror	-	2.0	-	mm
Horizontal Divergence Angle	-	0.3	°	°
Vertical Spot Size At Window Mirror	-	2.0	-	mm
Vertical Divergence Angle	-	0.3	°	°

Absolute Ratings

	Min	Max	Unit
Operating Temperature	15	35	°C
Operating Relative Humidity	-	75	%
Storage Temperature	-20	80	°C
Storage Relative Humidity	-	90	%
Lead Soldering Temperature (10 s max)	-	250	°C

This instruction is for reference only. Han's TCS improves its products continually, therefore may change specifications without notice to customers, for details, please contact with Han's TCS sales.

@2023 Han's TianCheng Semiconductor Co., Ltd. All rights reserved.